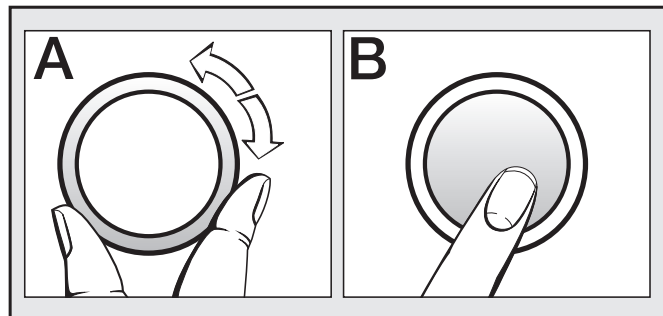


⚠ Please read the instruction manual before installing and using this machine and observe all warning and safety instructions.

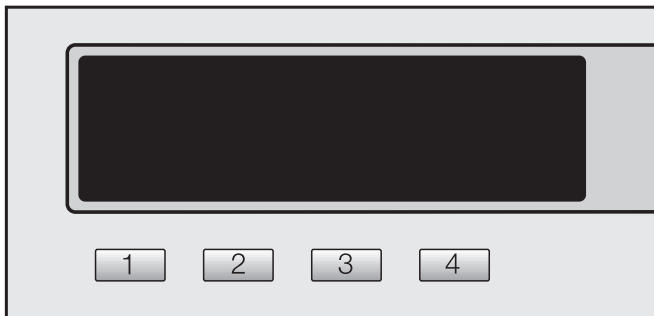
**Multi-function selector and display**



**Multi-function selector**

**Turning** the multi-function selector moves the highlighting to the next option.

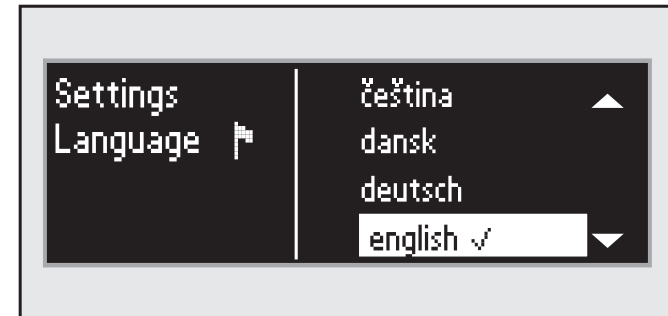
**Pressing** the multi-function selector selects the highlighted option.



**Short cut buttons**

The 4 programmes shown on the left of the display can be selected by pressing the **1** **2** **3** or **4** buttons. The short cut buttons have different functions in the other menus.

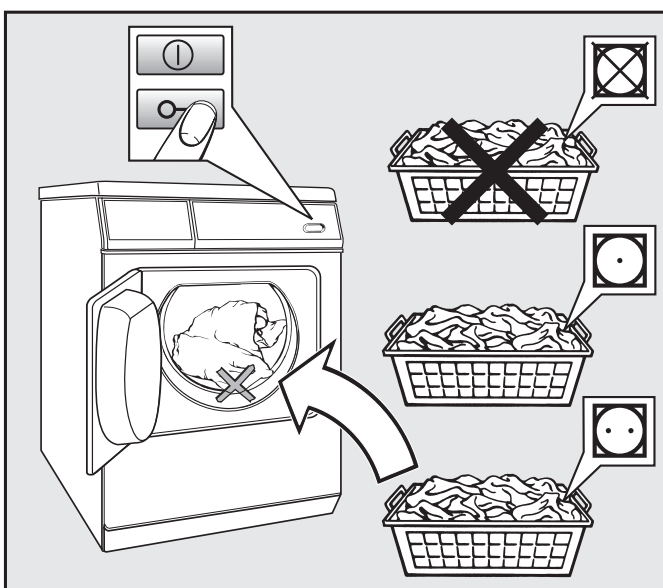
**Select the language**



The flag acts as a guide to prevent a language which will not be understood being set.

- Select and confirm the language you want.

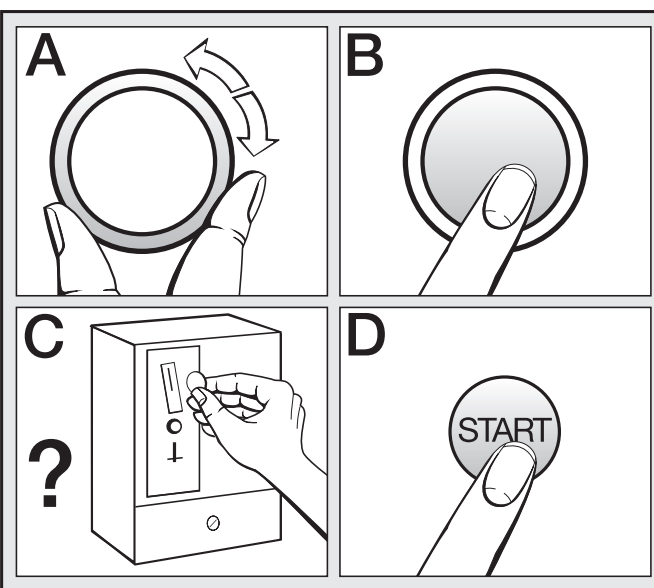
**1 Sort the laundry and load the machine**



- Sort according to laundry care symbols:
  - ☒ Do not dry.
  - ☉ Select *Low temperature*
  - ☉ Dry at normal temp.
- Shut the door with a gentle swing.

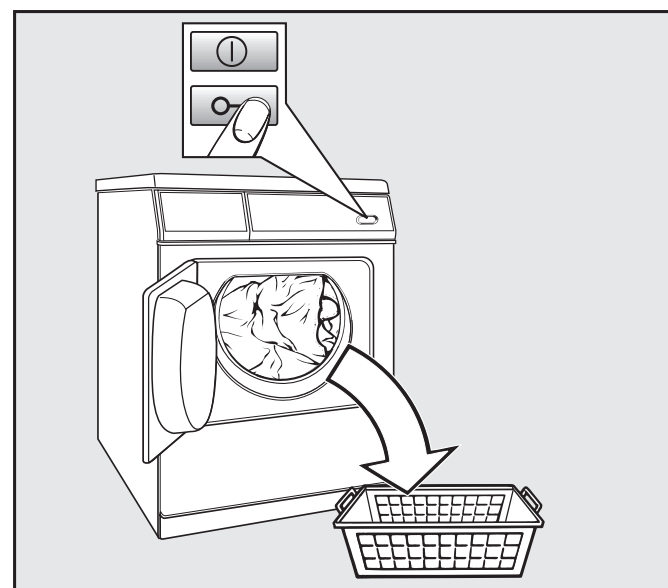
Make sure items do not get caught in the door opening.

**2 Select and start the programme**



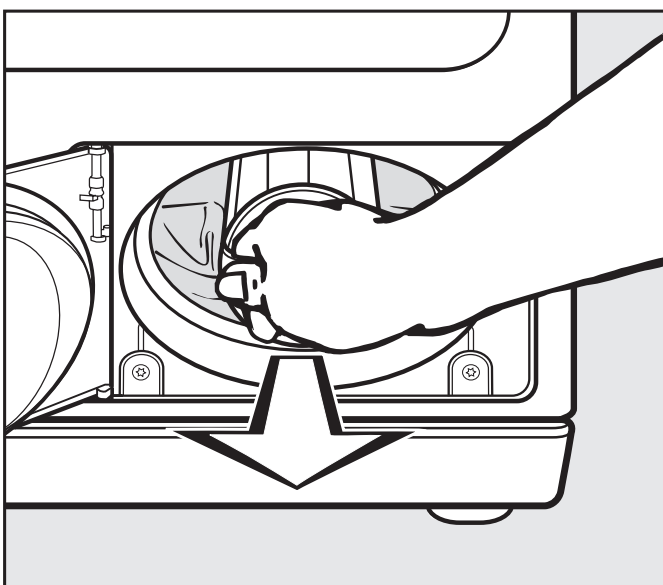
- Switch on using the button.
- **A+B** Turn and press.
- **C** If the machine has a payment system, insert payment.
- **D** Start the programme

**3 Unload the drum**

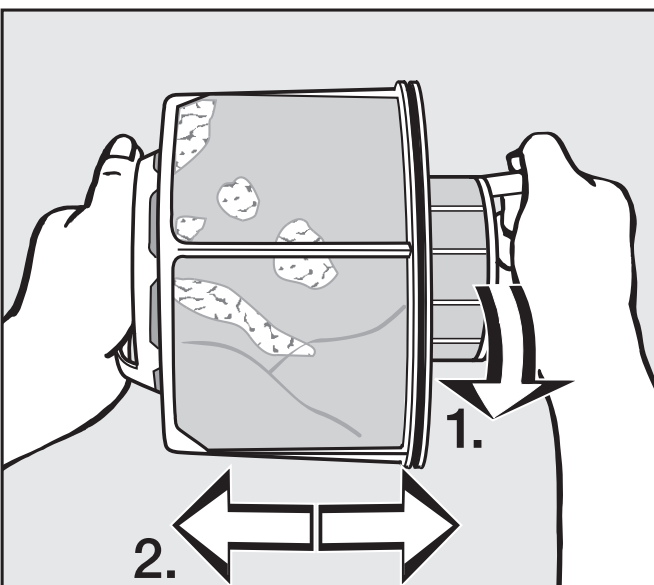


- *Finish* will appear in the display.
  - Open the door and remove the laundry.
- The dryer will switch off automatically (except when coin-operated).

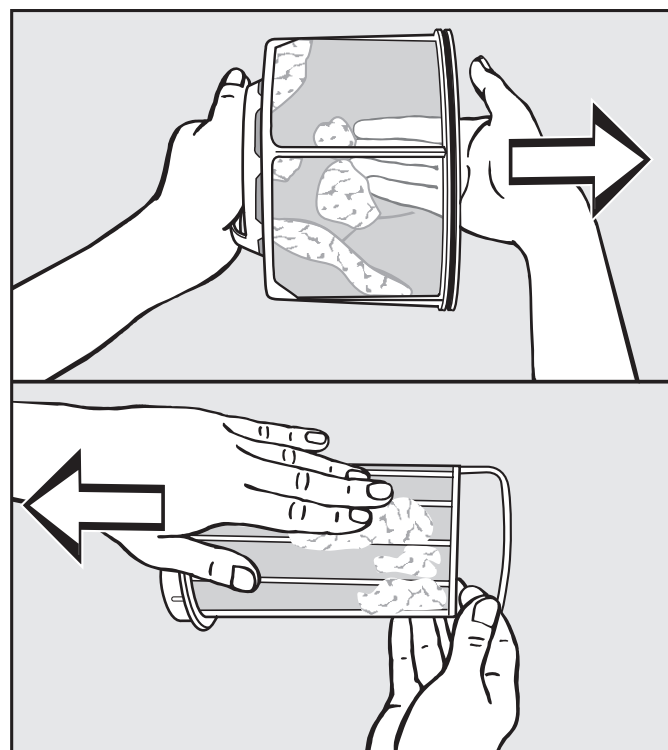
**Cleaning (only clean when the *Clean out airways* message comes up in the display.)**



- Confirm the reminder with *OK*.
- Open the access panel and pull the fluff filter out by the handle.



- Pull the two sections of the filter apart as shown.



- Shake out the fluff, or use your fingers or a vacuum cleaner to remove.
- Reassemble the filter and push it back into its housing.
- Close the access panel.



Basic programmes	Fabric type/Items	Notes	Load
<b>Cottons</b>			
Extra dry, Normal+, Normal, Hand iron $\Delta$ , Hand iron $\Delta\Delta$ , Machine iron	<ul style="list-style-type: none"> <li>– Single and multi-layered cotton fabrics:</li> <li>– Towelling, T-shirts, underwear, flannelette bed linen and baby clothes.</li> <li>– Workwear, jackets, cotton blankets, aprons, face flannels, tea towels, bed linen, towels, table linen.</li> </ul>	<ul style="list-style-type: none"> <li>– Laundry care symbol <math>\square</math>: Select <i>Low temperature</i>.</li> <li>– Select <i>Extra dry</i> for multi-layered and very thick fabrics.</li> <li>– Do not use <i>Extra dry</i> for items such as T-shirts, underwear or baby clothes, as this may cause them to shrink.</li> <li>– To prevent laundry from drying out, it should be rolled up until you are ready for ironing.</li> </ul>	Max. 6.5 kg*
<b>Minimum iron</b>			
Normal+, Normal, Hand iron $\Delta$	<ul style="list-style-type: none"> <li>– Minimum iron cotton, synthetic and mixed fibre fabric.</li> <li>– Workwear, overalls, pullovers, dresses, trousers, table linen</li> </ul>	Laundry care symbol $\square$ : Select <i>Low temperature</i> .	Max. 3.5 kg*
<b>Woollens handcare</b>			
Woollen garments.		Hang items in the open air to complete the drying process.	Max. 2.5 kg*
<b>Smoothing</b>			
<ul style="list-style-type: none"> <li>– Cotton and linen fabric.</li> <li>– Minimum iron mixed fibre, cotton or synthetic fabrics, trousers, anoraks, shirts.</li> </ul>		Hang items in the open air to complete the drying process.	Max. 3.0 kg*
<b>Cool air</b>			
Any item which only needs airing.			Max. 6.5 kg*
<b>Warm air</b>			
<ul style="list-style-type: none"> <li>– For finishing the drying process in multi-layered fabrics whose layers have different drying characteristics, or for drying single items.</li> <li>– Single items such as jackets, cushions and padded items.</li> </ul>		Laundry care symbol $\square$ : Select <i>Low temperature</i> .	Max. 6.5 kg*
<b>Denim</b>			
Normal, Hand iron $\Delta$	Denim garments, e.g. jeans, jackets, skirts, shirts.		Max. 3.5 kg*
<b>Shirts</b>			
Normal, Hand iron $\Delta$	Shirts and blouses.		Max. 2.5 kg*
<b>Outerwear</b>			
Normal, Hand iron $\Delta$	Outerwear which is suitable for drying in a tumble dryer.		max. 3.5 kg*
<b>Proofing</b>			
Microfibre fabrics, skiwear, fine, closeweave cotton garments (poplin) or tablecloths which are suitable for drying in a tumble dryer.		Fire hazard. Do not dry items which have been treated with proofing agents containing paraffin.	Max. 2.5 kg*
<b>Delicates</b>			
Normal+, Normal, Hand iron $\Delta$	<ul style="list-style-type: none"> <li>– Delicate cotton, synthetic and mixed fibre fabrics.</li> <li>– Thin pullovers, dresses, trousers, overalls, table cloths, shirts, blouses.</li> <li>– Lingerie and appliquéd fabrics.</li> </ul>		Max. 4.0 kg*
<b>Towelling</b>			
<ul style="list-style-type: none"> <li>– Large quantities of single-layer and multi-layer towelling items.</li> <li>– Towels, dressing gowns, face flannels, towelling bedding.</li> </ul>			Max. 6.5 kg*
<b>Silks handcare</b>			
Silks, e.g. blouses and shirts.		Hang items in the open air to complete the drying process.	Max. 1.5 kg*
<b>Reactivate</b>			
Outerwear which is suitable for drying in a tumble dryer.			Max. 2.5 kg*
<b>Standard pillows</b>			
Feather or down pillows. (2 pillows up to max. 80 x 80 cm)			Max. 2.5 kg*
<b>Basket Std. temp., Basket Low temp.</b>			
<ul style="list-style-type: none"> <li>– The drying basket must be in place when using this programme.</li> <li>– It is essential to observe the operating instructions for the drying basket.</li> </ul>		<ul style="list-style-type: none"> <li>– For thermally sensitive textiles/items, select <i>Basket Low temp</i>.</li> </ul>	Max. 3.0 kg*

\* Weight of dry items

